

## OUTCOME 4: ARGYLL & BUTE'S CHILDREN - OPERATION

---

### 1.0 EXECUTIVE SUMMARY

1.1 The purpose of this report is to provide the Area Community Planning Partners with the updated approach to the delivery of Argyll & Bute's Children in order to support the Integration of Health & Social Care in Argyll & Bute. In doing so to recognise the effective contributions made by Services and Partners in delivering our ambitions for Argyll & Bute's Children. This includes:

Housing  
Education  
Health & Social Care Partnership  
Police Scotland  
NHS  
SCRA  
3<sup>rd</sup> Sector

1.2 In summary the report outlines:

- The decision taken by the Community Planning Partnership Management Committee at their meeting of 9<sup>th</sup> June 2016;
- The revised roles and responsibilities of Argyll & Bute's Children, including statutory responsibilities for the Community Planning Partnership;
- The legislative requirements for integration of Health and Social care, the proposed Locality Planning arrangements ongoing joint working with Education Service and resulting implications for the current operation of and reporting by Argyll and Bute's Children;
- The rationale and purpose for the proposed revision of the existing Argyll and Bute's Children operating structure, and
- Revised and updated terms of reference to support the delivery of future Argyll and Bute's Children Strategic Group activities.

1.3 The Argyll and Bute vision commits partners across Argyll and Bute to '*Work together to achieve the best for children, young people and families.*' In order to achieve this vision the Integrated Children and Young People's Service Plan for 2014-17 sits within the '*Getting It Right For Every Child*' (GIRFEC) framework and is the principal document underpinning the work of partners within Outcome 4 of the SOA. This ensures that the outcomes we wish to achieve are linked with the relevant National Performance Framework (NPF) outcomes, which are:

- Our children have the best start in life to enable them to become:
  - Successful learners
  - Confident individuals
  - Effective contributors
  - Responsible citizens;
- We continue to improve the life chances for children, young people and families at risk, and
- We have tackled the significant inequalities in Scottish society.

The Integrated Children's Services plan for 2014-17 is integral to the achievement of Outcome 4 of the SOA and focuses on the key activity undertaken by partners working together to improve outcomes for children and young people. The plan supports partners to use resources more efficiently to ensure that children and families will benefit from a more streamlined and coherent approach to meeting their needs.

The plan is currently taken forward through the work of Argyll & Bute's Children with representation from each of the key partners across Health & Social Care, Police, Education and the 3<sup>rd</sup> Sector. In 2017 a new duty will be placed on local authorities to develop a strategic children's plan through the Children and Young People Act. A new integrated children's service plan will place Argyll & Bute in a good position to respond to the new statutory duty.

The Inspection of Services for Children in Argyll & Bute is expected in 2017. It is likely the inspection methodology will change and there will be a greater focus on risk based, proportionate inspection focused on child protection.

## **2.0 RECOMMENDATIONS**

The Mid Argyll, Kintyre and Islay Community Planning Group are asked to:

- (a) Note the revised operational protocols for Argyll & Bute's Children as noted in the organisational structure (Appendix 1);
- (b) Note the implementation of the revised structure (Appendix 2);
- (c) Note the current Children's Service Plan 2014-2017 is currently being updated to ensure compliance of the requirement for a new strategic children's plan through the Children and Young People Act;
- (d) Note that the new Argyll & Bute's Children Strategic Group have been tasked with taking forward the refresh of the Integrated Children's Service Plan for introduction in 2017, and
- (e) Note that the Argyll & Bute's Children strategic group have been requested to submit a draft Integrated Children's Service plan for consideration and approval by the Community Planning Partnership Management Committee.

---

**ARGYLL AND BUTE COUNCIL**

**MID ARGYLL, KINTYRE AND ISLAY  
COMMUNITY PLANNING  
PARTNERSHIP**

**ARGYLL & BUTE'S CHILDREN**

**10 AUGUST 2016**

---

## **OUTCOME 4: ARGYLL & BUTE'S CHILDREN - OPERATION**

---

### **3.0 INTRODUCTION**

3.1 The purpose of this report is to provide the Area Community Planning Partners with the updated approach to the delivery of Argyll & Bute's Children in order to support the Integration of Health & Social Care in Argyll & Bute. In doing so to recognise the effective contributions made by Services and Partners in delivering our ambitions for Argyll & Bute's Children. This includes:

Housing  
Education  
Health & Social Care Partnership  
Police Scotland  
NHS  
SCRA  
3<sup>rd</sup> Sector

The report included an update on the current operational management structure for Argyll & Bute's Children, an evaluation of the current practicalities in taking forward the work of Argyll & Bute's Children at a locality level and to make recommendations on a revised structure in order to allow for the continued achievement of the key elements of the children's plan taking account of the integration of Health & Social Care.

3.2 In summary the report outlined

- The roles and responsibilities of Argyll & Bute Children, including statutory responsibilities for the Community Planning Partnership;
- The legislative requirements for integration of Health and Social care, the proposed Locality Planning arrangements and resulting implications for the current operation of and reporting by Argyll and Bute's Children;
- A rationale and purpose for the proposed revision of the existing Argyll and Bute's Children operating structure, and
- Revised and updated terms of reference to support the delivery of future Argyll and Bute's Children Strategic Group activities.

## 4.0 RECOMMENDATIONS

The Mid Argyll, Kintyre & Islay Area Community Planning Group is asked to:

- (a) Note the revised operational protocols for Argyll & Bute's Children as noted in the organisational structure (Appendix 1);
- (b) Note the implementation of the revised structure (Appendix 2);
- (c) Note the current Children's Service Plan 2014-2017 is currently being updated to ensure compliance of the requirement for a new strategic children's plan through the Children and Young People Act;
- (d) Note that the new Argyll & Bute's Children Strategic Group have been tasked with taking forward the refresh of the Integrated Children's Service Plan for introduction in 2017, and
- (e) Note that the Argyll & Bute's Children strategic group have been requested to submit a draft Integrated Children's Service plan for consideration and approval by the Community Planning Partnership Management Committee.

## 5.0 DETAIL

5.1 The full partnership of the Community Planning Partnership through its strategic oversight of community planning and the development of the community plan has set out the overall direction for Community Planning Partners in Argyll and Bute. Through delegated responsibilities for individual aspects of community planning the Partnership has charged Argyll and Bute's Children with taking forward a number of the **Outcome 4** key activities.

5.2 The Argyll and Bute vision commits partners across Argyll and Bute to '*Work together to achieve the best for children, young people and families.*' In order to achieve this vision the Integrated Children and Young People's Service Plan for 2014-17 sits within the '*Getting It Right For Every Child*' (GIRFEC) framework and is the principal document underpinning the work of partners within Outcome 4 of the SOA. This ensures that the outcomes we wish to achieve are linked with the relevant National Performance Framework (NPF) outcomes, which are:

- Our children have the best start in life to enable them to become:
  - Successful learners
  - Confident individuals
  - Effective contributors
  - Responsible citizens;
- We continue to improve the life chances for children, young people and families at risk, and
- We have tackled the significant inequalities in Scottish society.

The principal remit of Argyll and Bute's Children is:

- (i) The commissioning, publication, reviewing and monitoring of Argyll and Bute's Integrated Children's Services Plan;
- (ii) Strategic overview for children's services including the effective implementation of GIRFEC practice model and the inspection methodologies for Community Planning Partners;
- (iii) Ensuring consistent development of good quality services that meet local needs through sub groups;
- (iv) Maintain oversight for the wider work associated to Argyll & Bute's Children, and
- (v) Ongoing self-evaluation and continuous improvement activity.

5.3 The Integrated Children's Services plan for 2014-17 is integral to the achievement of Outcome 4 of the SOA and focuses on the key activity undertaken by partners working together to improve outcomes for children and young people. The plan supports partners to use resources more efficiently to ensure that children and families will benefit from a more streamlined and coherent approach to meeting their needs. In 2017 the Children and Young People Act will place a duty on local authorities to publish a strategic children's plan.

The plan is currently taken forward through the work of Argyll & Bute's Children with representation from each of the key partners across Health, Police, Social Work, Education, 3<sup>rd</sup> Sector.

#### **5.4 Introduction of Health & Social Care and proposals for locality working**

5.4.1 Following the introduction of the Integrated Joint Board for Health & Social Care on 1<sup>st</sup> April 2016 the delivery of Health & Social Care Services is now delivered through the new Health and Social Care Partnership. The remit of the board includes:

- Functions for adult and children and families social work, community justice services and NHS services including primary and secondary care, acute services, maternity services and health visiting delegated to the Integration Joint Board;
- Single service delivering on strategic objectives set out in the 3 year strategic plan and the developing Locality Plans;
- Establish operational and management arrangements to respond to local needs ensuring services are "locality planned, owned and delivered";
- Focus on continuous improvement, and
- Clear communication and engagement.

5.4.2 A key feature of the locality model will encompass the implementation of Locality Planning Groups to ensure the delivery of:

- Health and Needs Assessment;
- Patient/User pathways and experience;
- Financial planning;
- Locality service profiles;

- Workforce Planning;
- Continuous Quality Improvement, and
- Leadership development.

5.4.3 The current proposal agrees to the delivery of services to communities from birth to elderly. Whilst it is proposed that the Locality Planning Groups cover this wide spectrum of need there is a need to ensure that the focus on delivery of the priorities of the ICSP is maintained within the broader planning priorities of the HSCP and to ensure the engagement of those partners, including Police Scotland, Education and Early Years, not currently included in HSCP Locality Planning structures.

5.4.4 Following recent consideration of both the Health and Social Care Partnership and the delivery of holistic services for children, Argyll and Bute's Children members acknowledged and welcomed the locality planning model, noting the value and impact this will have for Health and Social Care users.

5.5.1 In response to the future challenges members of Argyll & Bute's Children prepared a revised structure which takes account of the new Health & Social Care Integration operational model reflecting the implications for the current Argyll and Bute's Children's Executive and Thematic Groups currently charged with delivering the expectations of the Children's Services Plan.

5.5.2 Notably the current Executive Groups should provide a strategic lead within each of the 4 area localities of Argyll & Bute and are tasked with taking forward the key performance activities at a local level.

5.5.3 This paper presented an alteration to the current framework with a specific aim of ensuring continued delivery and achievement of the Children's Service Plan whilst taking full cognisance of the proposed Health & Social Care Integration locality operational groups.

5.6 The revised structure (as detailed within Appendix 2) denotes adjustments to the current operation protocols for Argyll & Bute's Children. Specifically that the existing membership of Argyll & Bute's Children assumes greater strategic accountability with a revised membership at Strategic Management Level, e.g. Executive Director and Head of Service level representation. Responsibility for Chairing and reporting to be tasked to the Executive Director of Community Services.

In summary the proposed revision operating model is as follows:

<b>Current Operation</b>	<b>Revised Operation</b>
Community Planning Partnership Management Board	No change

Argyll & Bute's Children	Revised membership, as outlined in this report, section 5.2. Remit to be focussed on strategic level decision making.
Child Protection Committee (CPC)	No implications
Argyll and Bute's Children Thematic Groups	Revised to bring together the work of both the Thematic Groups and the Local Executive Groups.
Argyll and Bute's Children Local Executive Groups	

## 5.7 Argyll and Bute's Children: Revised membership

The revised Argyll & Bute's Children membership is now as follows:

Revised Group	Membership	Roles and Accountabilities
Argyll & Bute's Children Strategic Group	<ul style="list-style-type: none"> <li>• Executive Director Community Services</li> <li>• Head of Service: Education, as appropriate</li> <li>• HSCP x 2</li> <li>• Housing</li> <li>• Head of Department (Police/Fire &amp; Rescue)</li> <li>• Chair of Child Protection Committee</li> <li>• 3<sup>rd</sup> Sector Representatives</li> <li>• SCRA</li> <li>• Lead Nurse</li> <li>• Chief Social Work Officer</li> <li>• Child Health Commissioner</li> </ul>	
Child Protection Committee (CPC)	<ul style="list-style-type: none"> <li>• Head of Service (as appropriate)</li> <li>• Chief Social Work Officer</li> <li>• Health &amp; Social Care</li> <li>• Police Scotland</li> <li>• SCRA</li> <li>• 3<sup>rd</sup> Sector Representation</li> <li>• Lead Officer, Child Protection</li> <li>• Senior Solicitor, A&amp;BC</li> <li>• Inter-Agency Training Co-ordinator</li> <li>• Consultant Paediatrician, GG&amp;C</li> <li>• Criminal Justice</li> <li>• Education Service representative</li> <li>• Royal Navy Marines Welfare</li> </ul>	

	<ul style="list-style-type: none"> <li>• Care Inspectorate</li> <li>• ADP Co-ordinator</li> </ul>	
Argyll & Bute's Children Performance & Quality Assurance Group	<ul style="list-style-type: none"> <li>• Chair from each of the four Locality Groups</li> <li>• Education Manager: Performance &amp; Improvement</li> <li>• Senior Performance &amp; Improvement Manager</li> <li>• Consultant Nurse</li> </ul>	
Argyll & Bute's Children Executive Groups x 4	<p>Representatives from each of the key delivery partners including:</p> <ul style="list-style-type: none"> <li>• Education</li> <li>• Police</li> <li>• Fire and Rescue</li> <li>• 3<sup>rd</sup> Sector</li> <li>• Health &amp; Social Care Executive Group representative</li> </ul>	

## 5.8 Terms of Reference

A revised terms of reference, contained as Appendix 3 sets out the terms and reference for the operation of Argyll and Bute's Children.

## 5.9 Frequency and reporting for Argyll and Bute's Children

In adherence to the revised terms of reference Argyll and Bute's Children Strategic Group will meet for a minimum of 3 meetings per annum. The current reporting mechanism remain unchanged.

## 6.0 CONCLUSION

6.1 This paper outlines the revised approach to the delivery of Argyll & Bute's Children in order to further enhance collaborative working across all Services, while supporting the impending Integration of Health & Social Care in Argyll and Bute.

## 7.0 IMPLICATIONS

7.1 Policy

7.2 Financial

7.3 Legal

7.4 HR

7.5 Equalities



7.6 Risk

7.7 Customer Service

## **Executive Director of Community Services**

### **For further information contact:**

Ann Marie Knowles, Acting Executive Director (Community Services),  
Kilmory, Lochgilphead, Argyll & Bute, PA31 8RT

Email: [annmarie.knowles@argyll-bute.gov.uk](mailto:annmarie.knowles@argyll-bute.gov.uk)

Telephone: 01546 604112

## **APPENDICES**

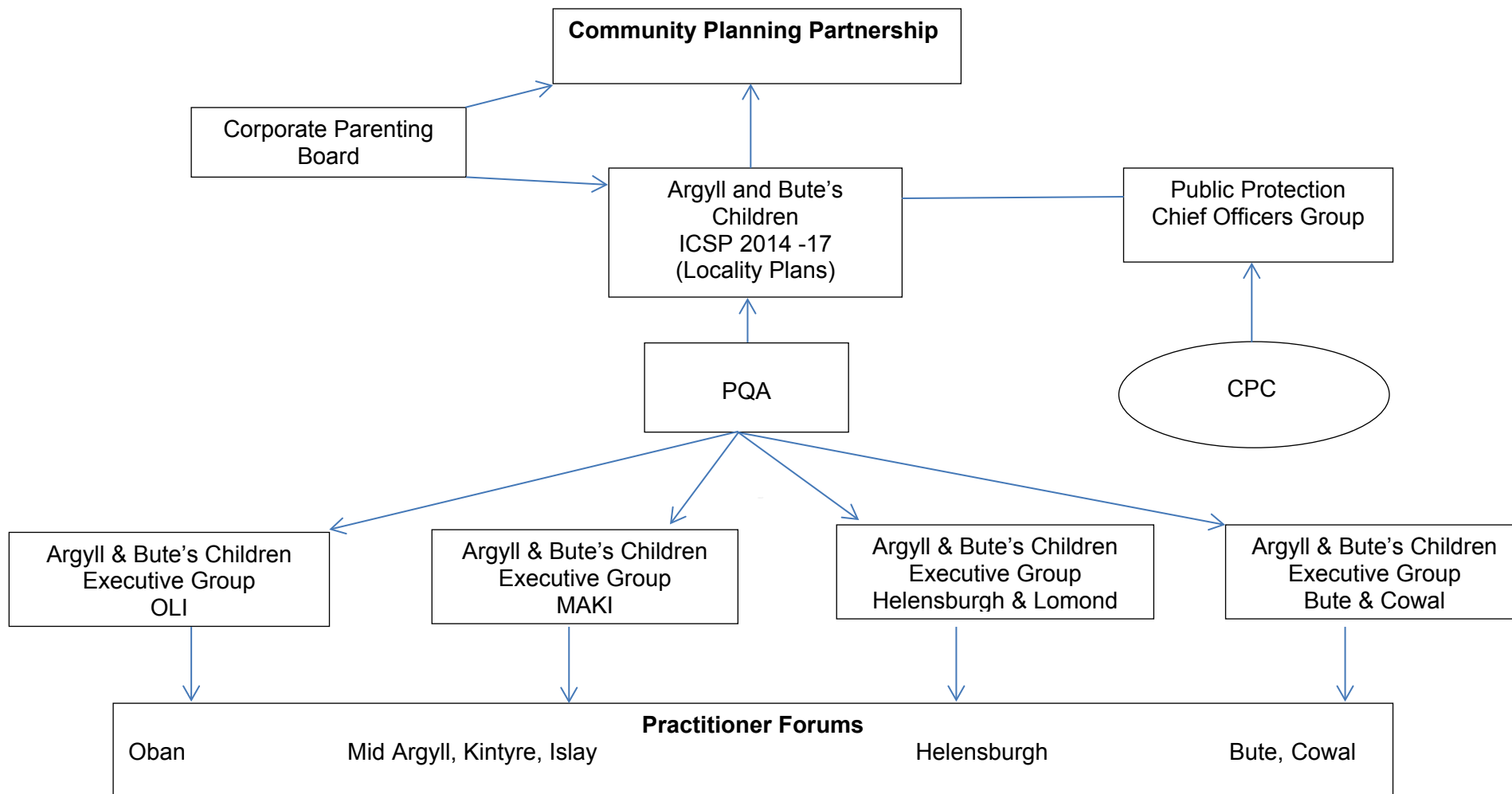
Appendix 1 Current Argyll & Bute's Children Structure

Appendix 2 Proposed Argyll & Bute's Children Structure

Appendix 3 Revised Terms of Reference

# Appendix 1





- Executive Groups  
Standing Agenda Items
- Child Protection
  - Training
  - GIRFEC
  - Local issues

## TERMS OF REFERENCE

### Meeting Title: Argyll and Bute's Children

#### Meeting Remit

- (vi) The commissioning, publication, reviewing and monitoring of Argyll and Bute's Integrated Children's Services Plan.
- (vii) Strategic overview for children's services including the effective implementation of GIRFEC practice model and the inspection methodologies for Community Planning Partners.
- (viii) Ensuring consistent development of good quality services that meet local needs through sub groups.
- (ix) Maintain oversight for the wider work associated to Argyll & Bute's Children.
- (x) Ongoing self-evaluation and continuous improvement activity to ensure high quality service delivery

#### Reporting and Accountability

Ensure that Terms of Reference reflect the structure on page 17 of the Integrated Children's Service Plan i.e. reports to COPPG and Community Planning Partnership Management Committee

Group	Membership
Argyll & Bute's Children Strategic Group	<ul style="list-style-type: none"> <li>• Executive Director Community Services</li> <li>• CSWO</li> <li>• Head of Service: Education, Health &amp; Social Care</li> <li>• Head of Department (Police/Fire &amp; Rescue)</li> <li>• Chair of Child Protection Committee</li> <li>• 3<sup>rd</sup> Sector Representatives</li> <li>• SCRA</li> <li>• Lead Nurse</li> </ul>
Argyll & Bute's Children Performance & Quality Assurance Group	<ul style="list-style-type: none"> <li>• Chair of each Locality Group</li> <li>• Education Manager: Performance &amp; Improvement</li> <li>• Senior Performance &amp; Improvement Manager</li> <li>• Consultant Nurse</li> </ul>
Argyll & Bute's Children	Representatives from each of the partners including:

Executive Groups x 4	<ul style="list-style-type: none"><li>• Education</li><li>• Police</li><li>• Fire and Rescue</li><li>• 3<sup>rd</sup> Sector</li><li>• Health &amp; Social Care Executive Group representative</li></ul>
----------------------	--

### **Quoracy**

There must be members from each of the agencies (Health and Social Care, Education, Third Sector and Police) present to make the meeting quorate.

In the event of a meeting not being quorate, then meeting will proceed; any issues or recommendations being made would be subject to agreement by other members.

This agreement could be reached either at the next meeting, or if the decision was urgent, then it could be reached by emailing the group members.

### **Agenda Setting**

Agenda will be circulated seven days in advance of meeting.

### **Administrative Arrangements**

Administrative support will be provided to the Chair by that agency's clerical staff.

### **Frequency**

A minimum of three meetings per annum